

# Mott Sentry Filters.

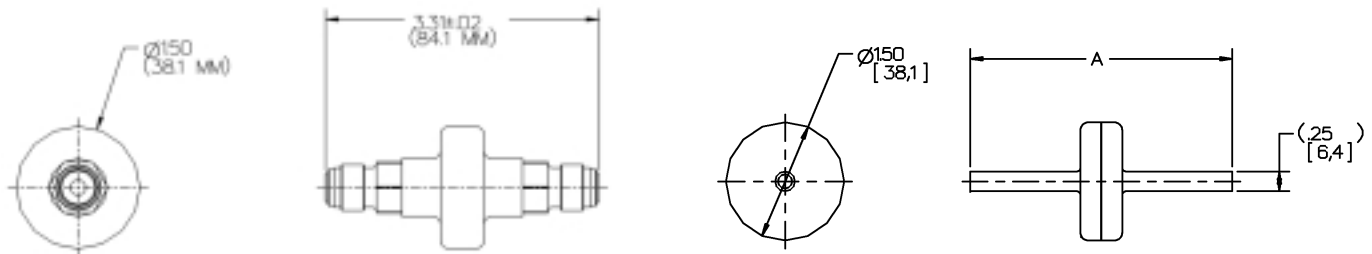


The high flow of Teflon® with the strength and long life of Mott porous metal.

- Penta® Nickel Media
- True 9-Log Filtration Efficiency of Particles as Small as 0.003µm @ 30 SLPM
- High Temperature Tolerance up to 450°C (Inert Gases)
- Withstands High Pressures to 3000 PSIG (206.8 Bar) at 52°C
- 316L VAR Stainless Steel Housing Construction
- $1 \times 10^{-9}$  atm cc/sec Helium Leak Rating
- $< 1$  Particle/Ft<sup>3</sup> Particle Shedding
- Maximum Forward and Reverse Differential Pressure of 500 PSIG (34.5 Bar) @ 52°C
- Cleaned and Packaged in a Class 100 Clean Room

► **mott corporation**  
High Purity Products

# Available Configurations

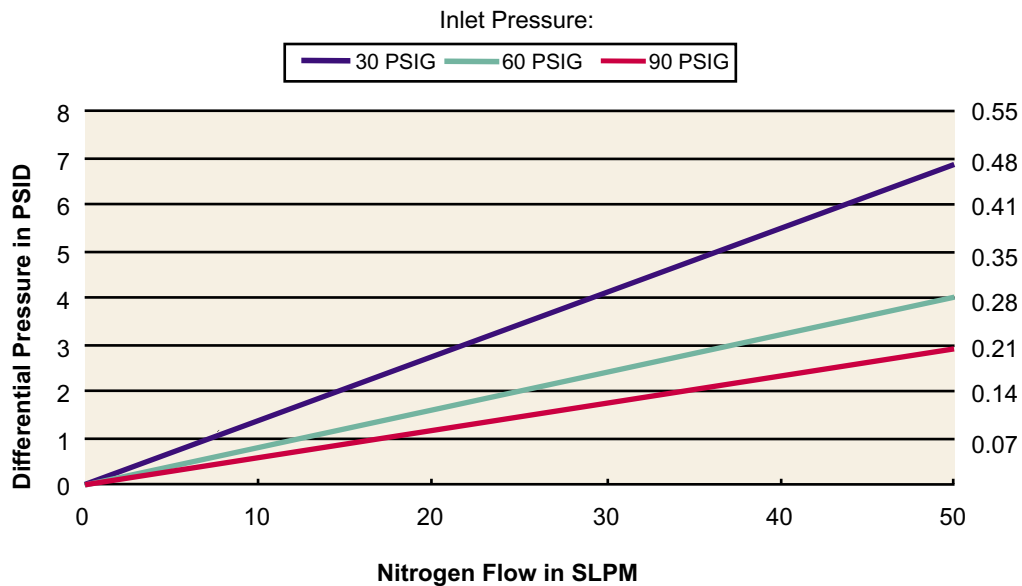


**Note:** A = OAL (see Dimensions below)

## Dimensions

Computer Part Number (CPN)	Part Description	Overall Length (OAL)	Diameter	End Fitting	Media Material
6815001	SEN331NFF11	3.31" (84mm)	1.50" (38mm)	1/4" Face Seal	Nickel
6815002	SEN331NTT11	3.31" (84mm)	1.50" (38mm)	1/4" Tube Stub	Nickel
6815003	SEN175NTT11	1.75" (45mm)	1.50" (38mm)	1/4" Tube Stub	Nickel
6815004	SEN112NTT11	1.12" (28mm)	1.50" (38mm)	1/4" Tube Stub	Nickel

## Mott Sentry Filters



[www.mottcorp.com](http://www.mottcorp.com)

**mott corporation**

84 Spring Lane, Farmington, CT 06032-3159  
 860-747-6333 Fax 860-747-6739  
[www.mottcorp.com](http://www.mottcorp.com)



ISO 9001:2008 CERTIFIED

HPSENTRY Rev0 0602 2.5M